

Figure 3-4: Western Los Angeles County Proposed Bicycle Network

Los Angeles County Bicycle Master Plan

Source: Los Angeles Metro (2006; 2010); Alta Planning + Design (2010)
Date: 1/30/2011

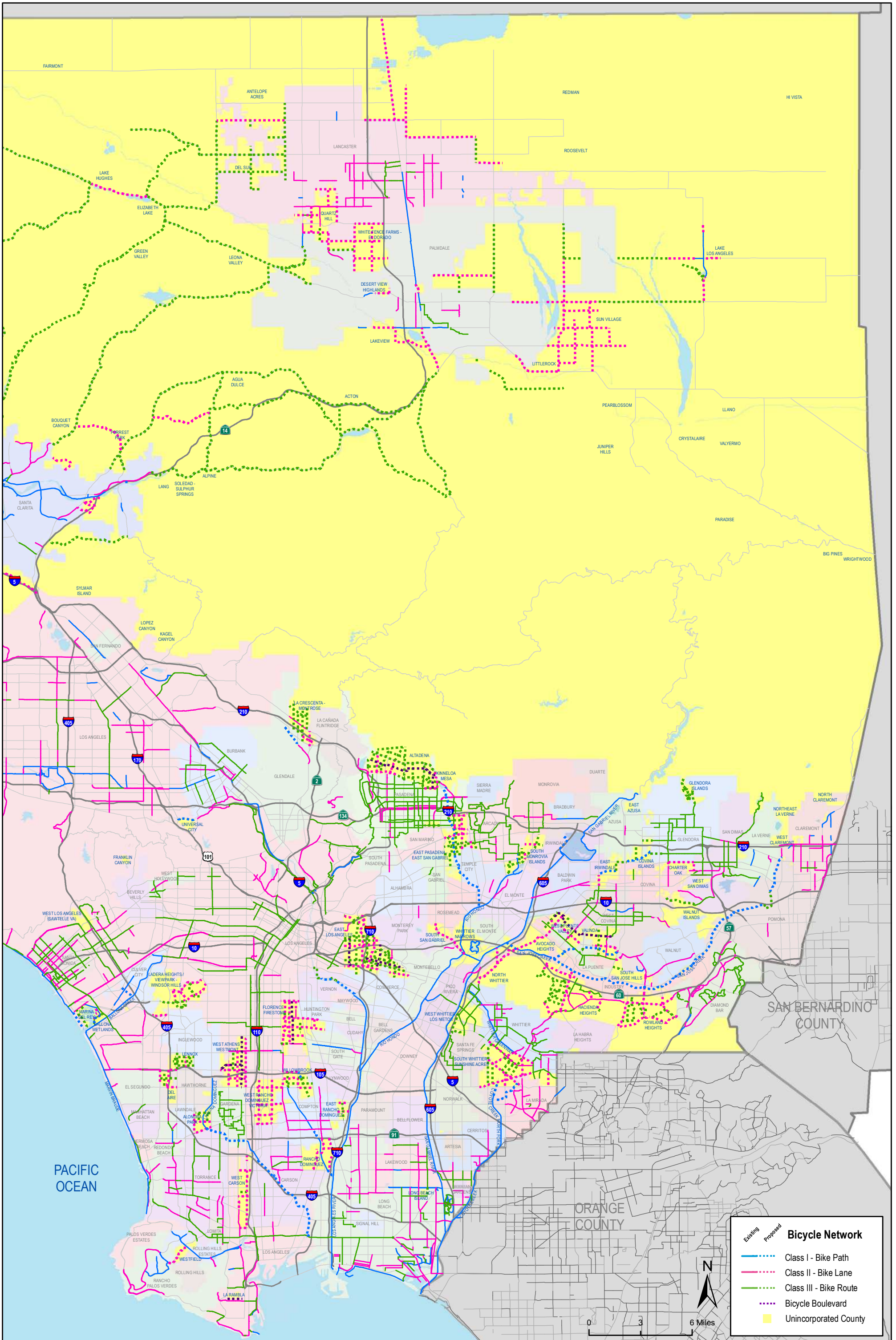


Figure 3-5: Eastern Los Angeles County Proposed Bicycle Network

Los Angeles County Bicycle Master Plan

Source: Los Angeles Metro (2006; 2010); Alta Planning + Design (2010)
Date: 1/30/2011

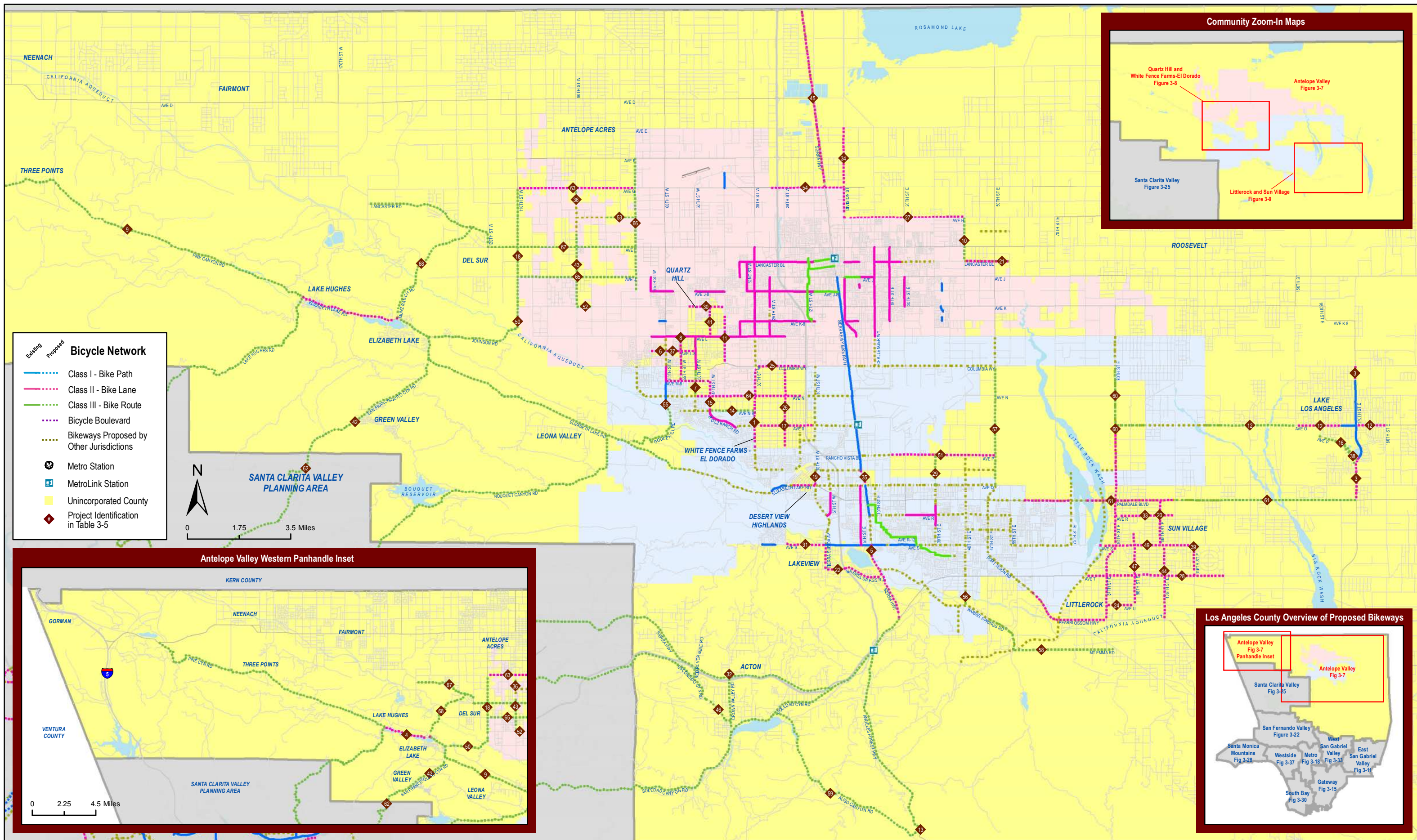


Figure 3-7: Antelope Valley Planning Area Proposed Bicycle Facilities

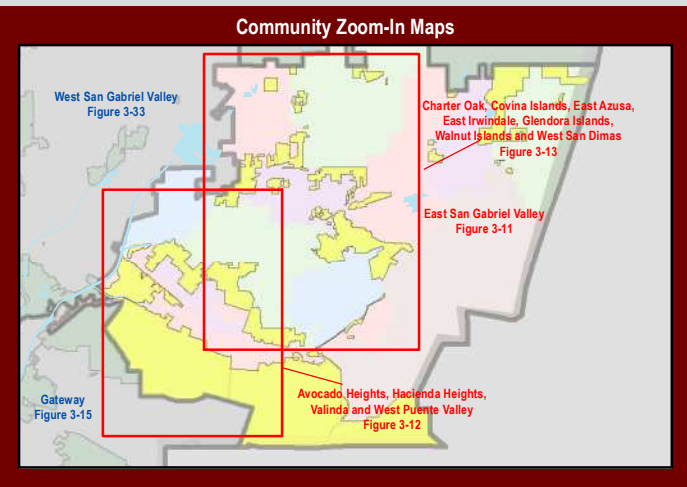
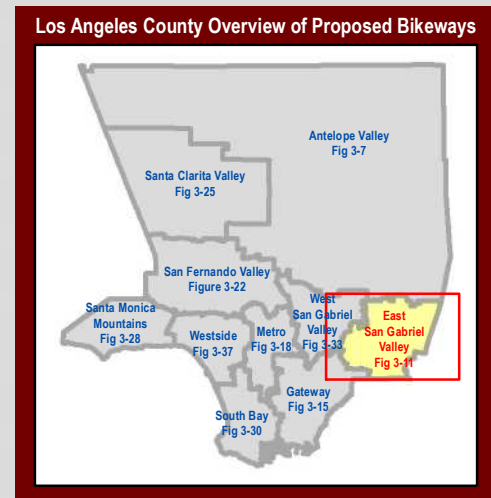
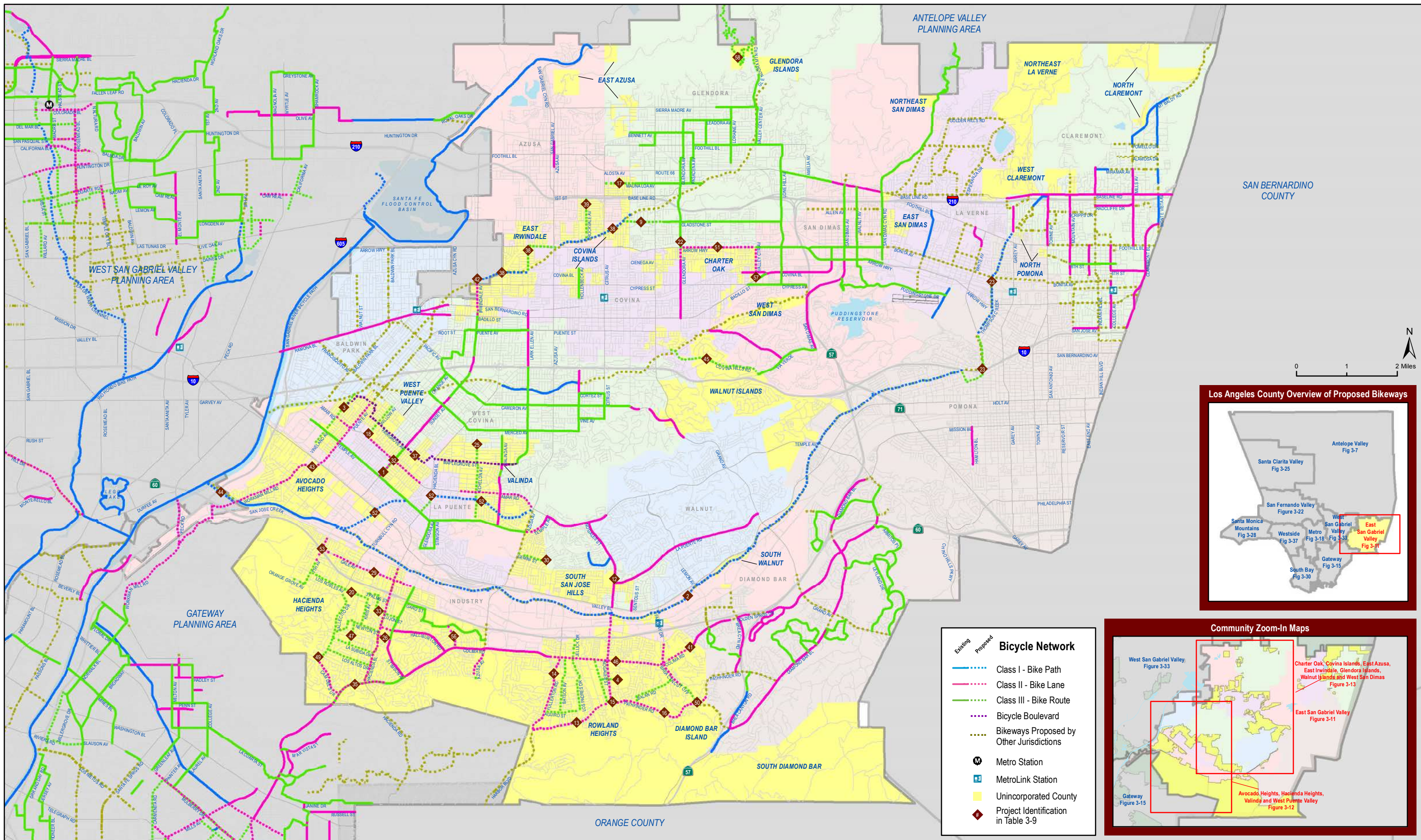


Figure 3-11: East San Gabriel Valley Planning Area Proposed Bicycle Facilities

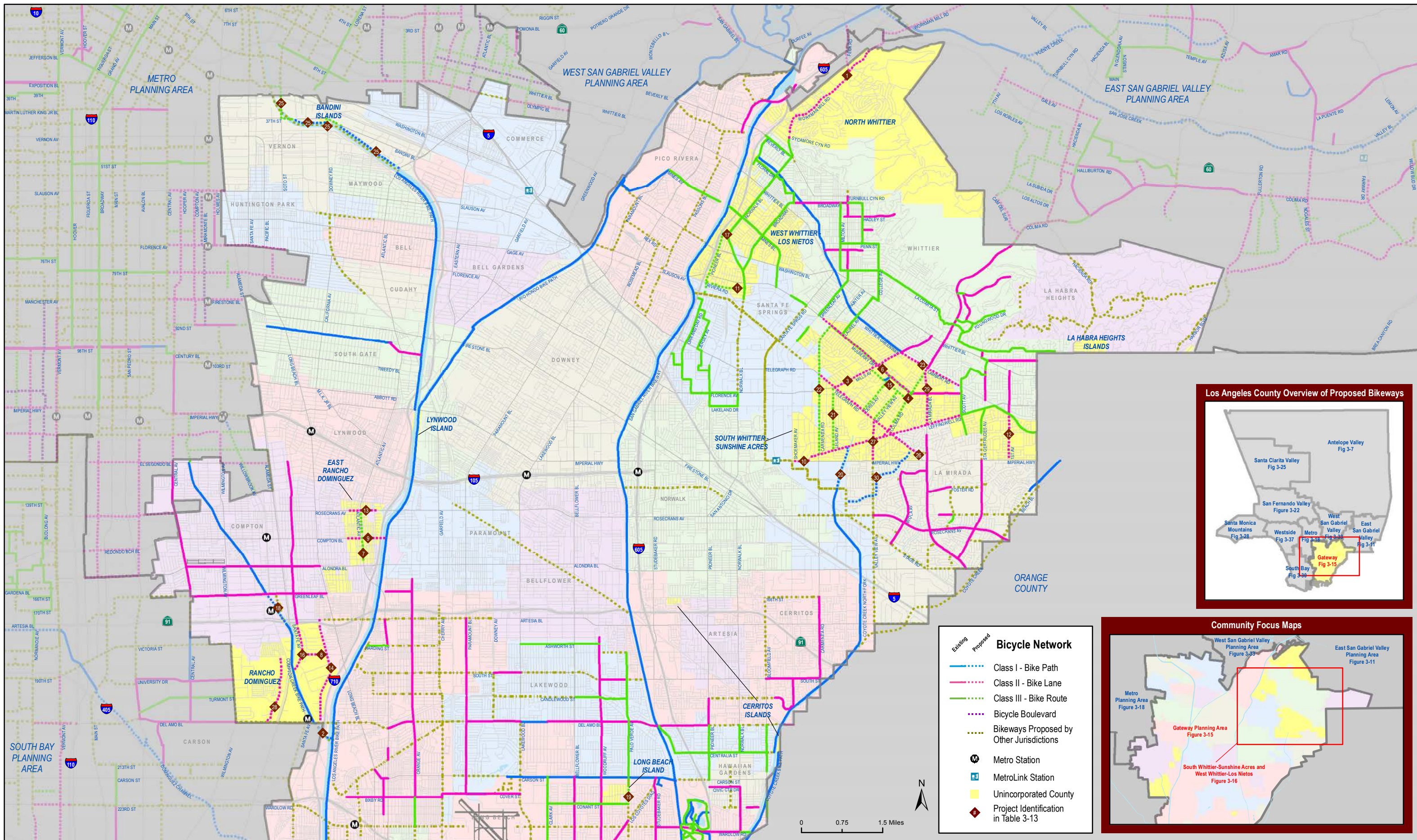


Figure 3-15: Gateway Planning Area Proposed Bicycle Facilities

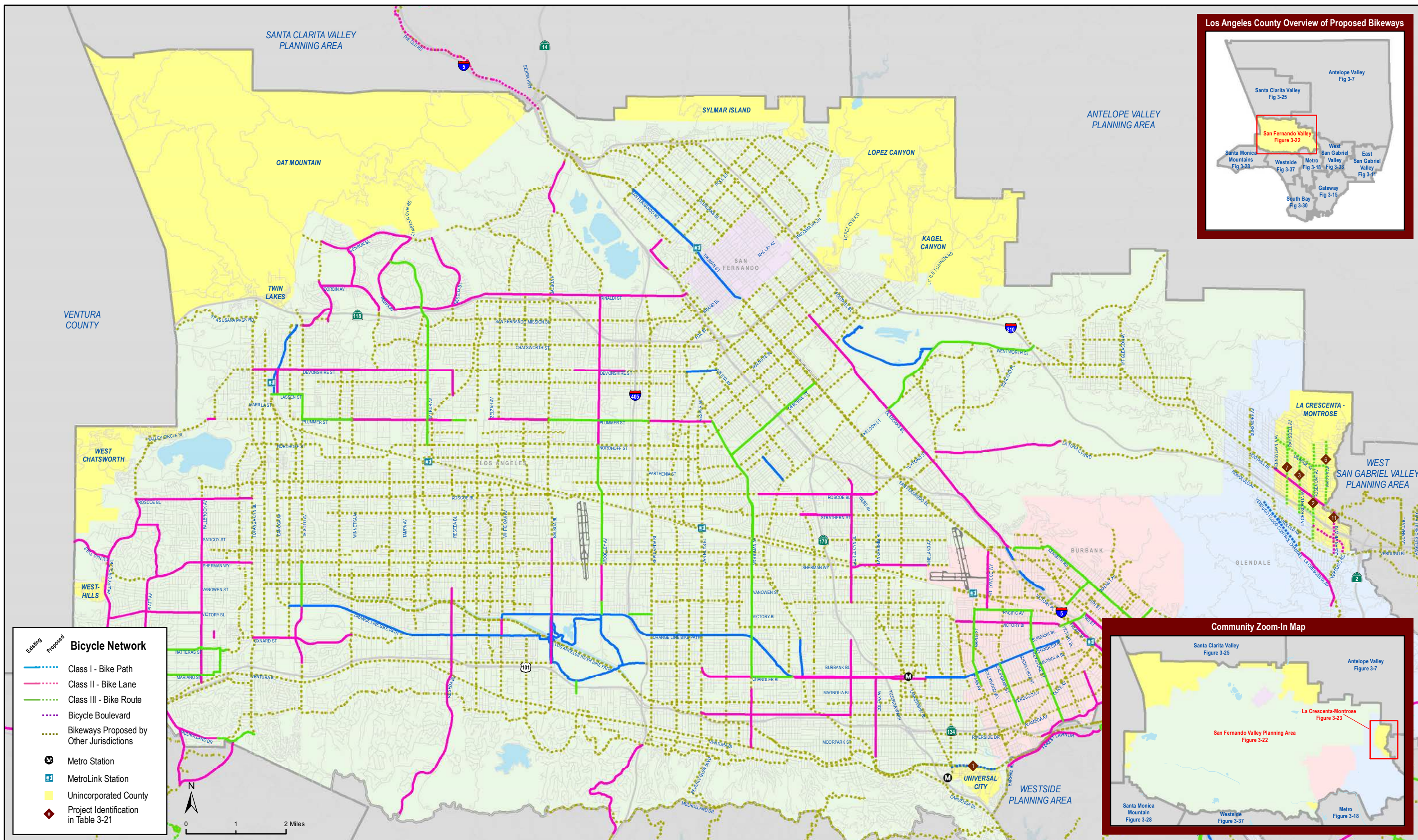
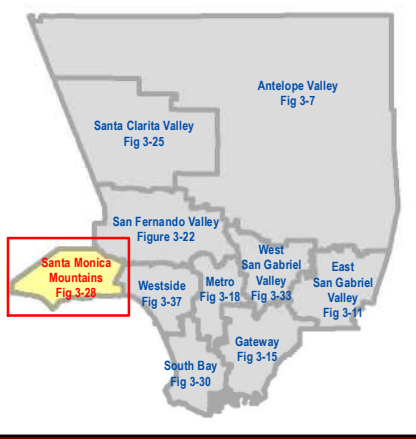


Figure 3-22: San Fernando Valley Planning Area Proposed Bicycle Facilities

Los Angeles County Overview of Proposed Bikeways



Bicycle Network

- Existing Proposed
- Class I - Bike Path
- Class II - Bike Lane
- Class III - Bike Route
- Bicycle Boulevard
- Bikeways Proposed by Other Jurisdictions
- Metro Station
- MetroLink Station
- Unincorporated County
- Project Identification in Table 3-29

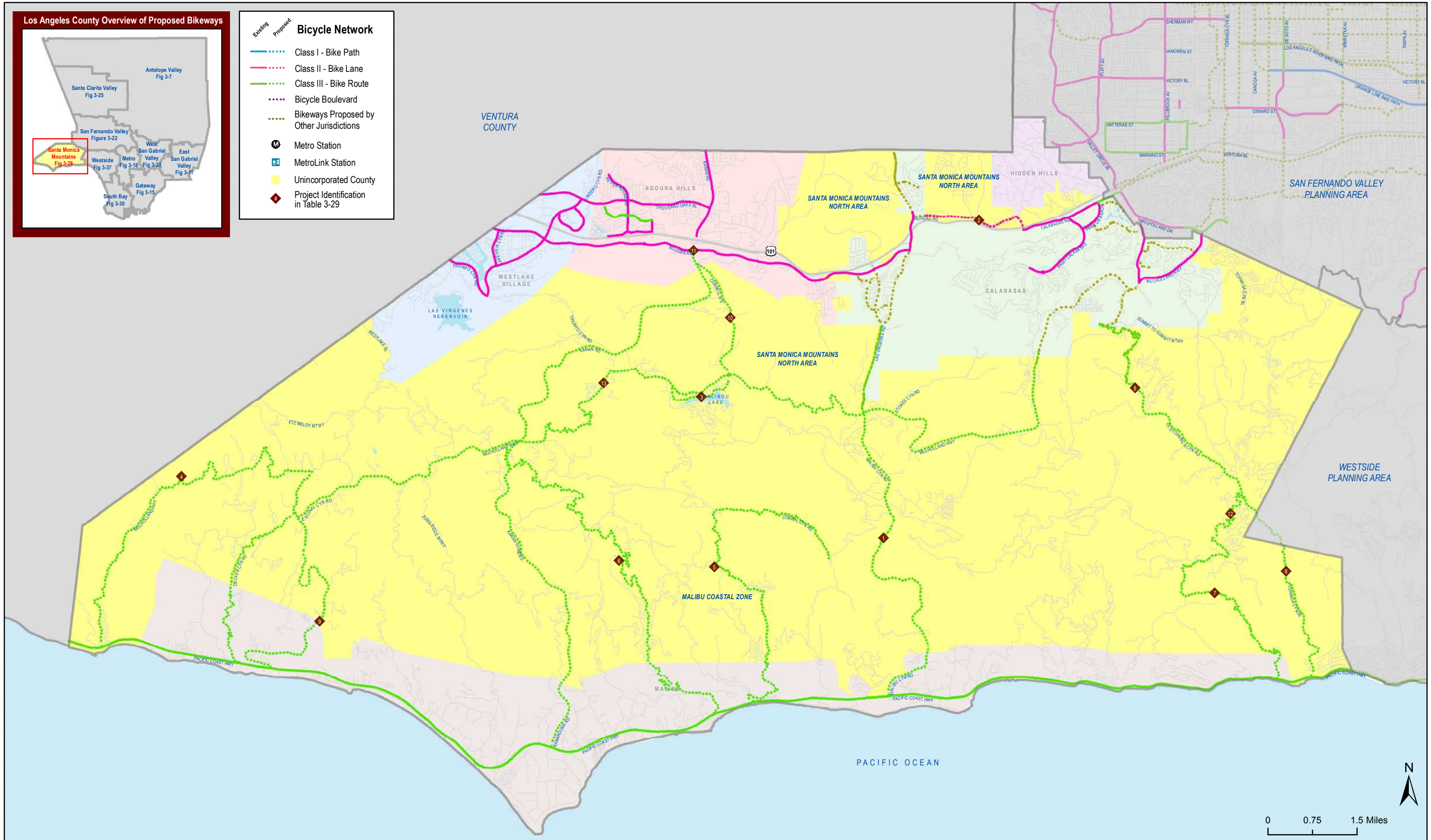


Figure 3-28: Santa Monica Mountains Planning Area Proposed Bicycle Facilities

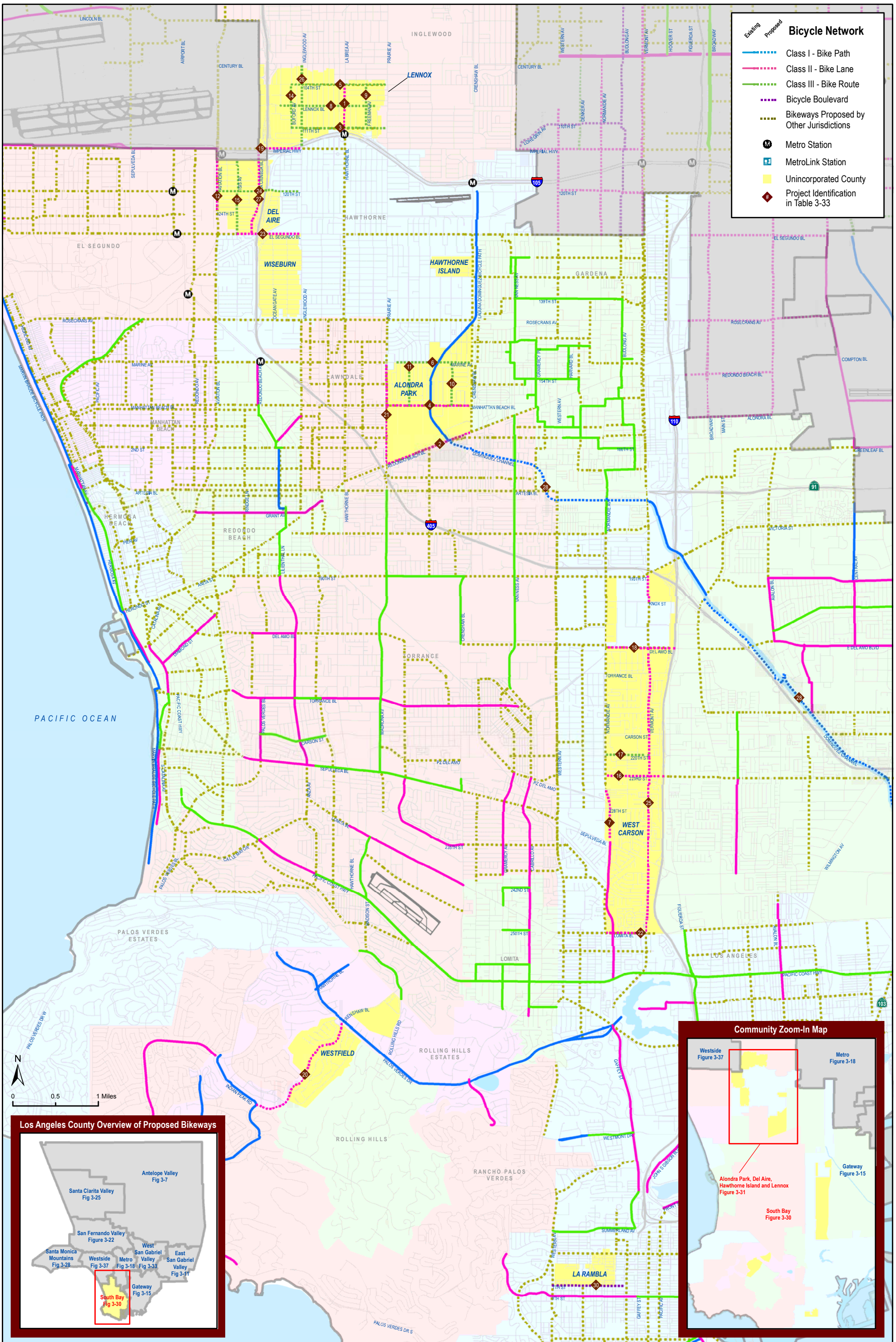


Figure 3-30: South Bay Planning Area Proposed Bicycle Facilities

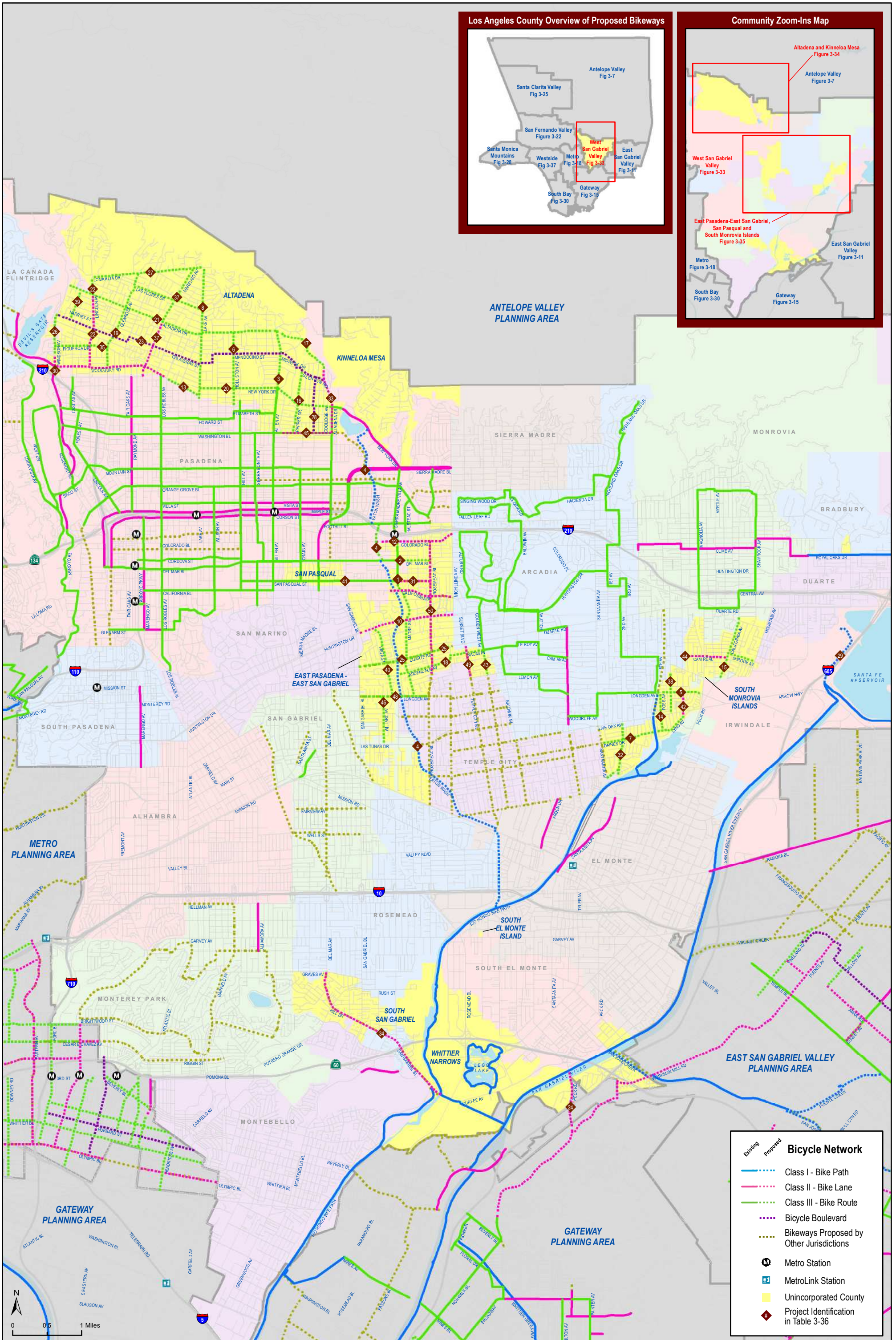


Figure 3-33: West San Gabriel Valley Planning Area Proposed Bicycle Facilities

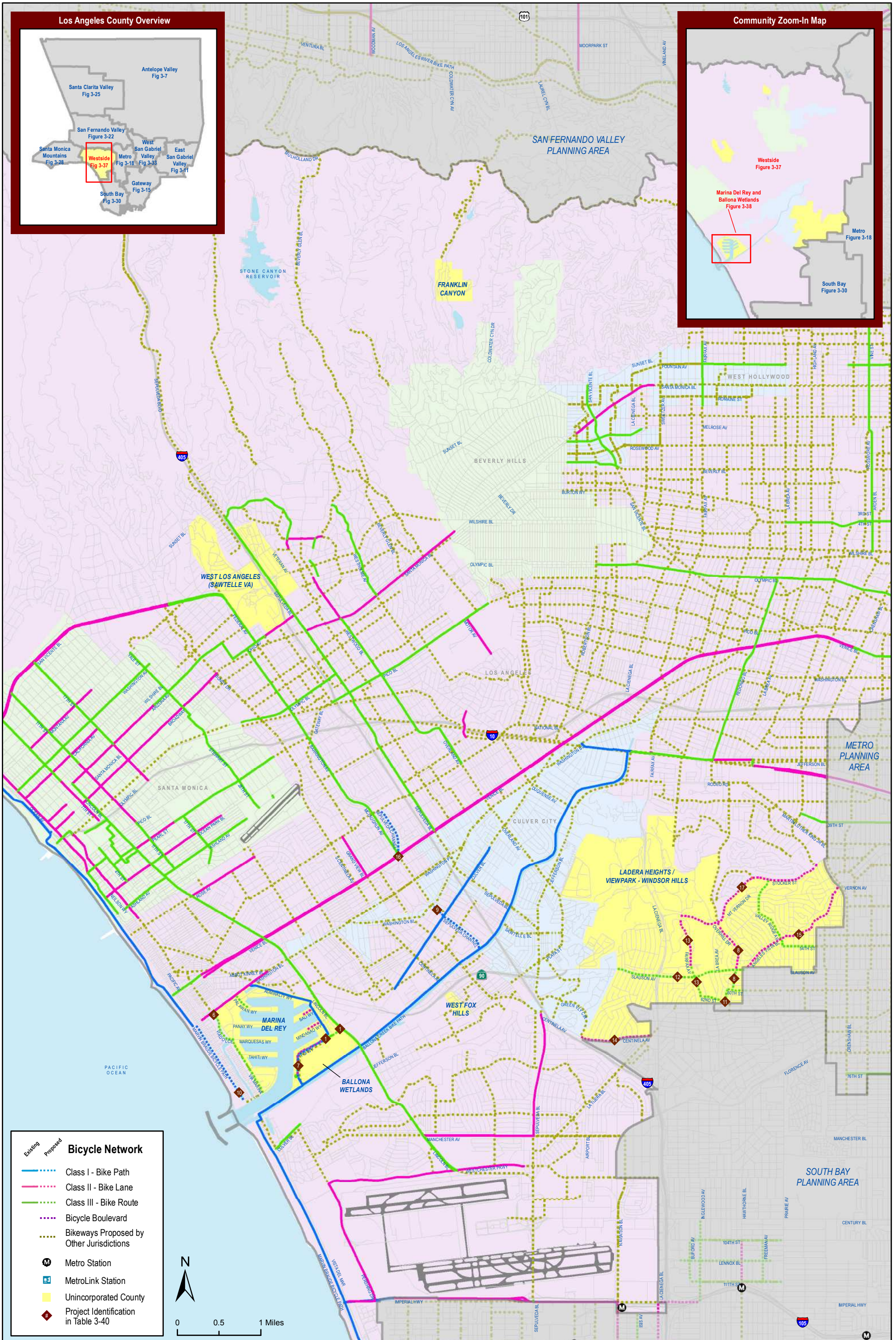


Figure 3-37: Westside Planning Area Proposed Bicycle Facilities

Los Angeles County Bicycle Master Plan

Source: Los Angeles Metro (2006; 2010); Alta Planning + Design (2010)
 Date: 10/14/11